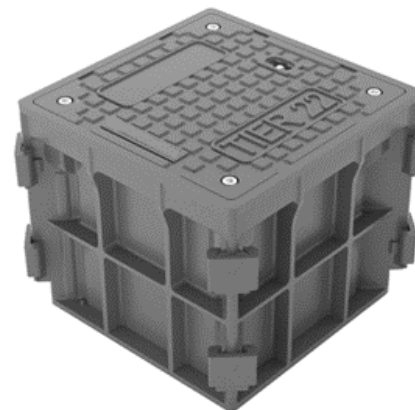


Connect & Protect Underground Fiber Optic Network

Model – CYV-1212 Vault Series

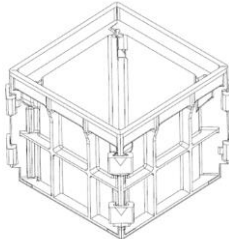
CANYON CYV-1212 Series Vault system is SCTE77-Tier22 load capacity, designed for underground network access, especially for fiber optical and electricity industries. Manufactured with innovated composite material, making CYV-1212 Vault Serie an ideal solution of strong, light, flexible, time & cost saving comparing to concrete manholes.



Advantages

- Modular design with knock-down delivery and on-site set up
- Strong but light composite material construction
- Cost saving due to light weight, modular design
- Flexible to drill on wanted size for duct access; Duct entry provided
- Durability and resistance of entire construction up to SCTE-77 Tier22

Order & Specification Information:

Vault Model#	CYV-1212
Outlook	
Internal Size (inch) WxLxH	12x12x12
External Size (inch) WxLxH	16x16x13
Weight (with Cover, lbs)	41.6
Side Wall parts included	
CYVP-1212 (Qty / Dimension)	4 / 16x13 / 6 lbs
CYVP-1212C (Qty / Dim / Weight)	1 / 15.6x15.6 inch / 17.6 lbs