

Connect & Protect Aboveground Fiber Optic Network

Model – CYP-1236 Pedestal Series

CANYON CYP-1236, Pedestals system designed for the placement of supporting brackets and fiber distribution boxes that are used in Drop Cables and offer the ease of installation of standard cable in stranded single-tube design, as well as to extend multiple tube fiber optic cables constructions.

CYP-1236 Pedestals system are a key element of all kinds of FTTP solution, suitable on both greenfield and brownfield Fiber/Telecom deployment. There are two types of stakes to mount fiber box inside, “I” type bracket and “n” type bracket.



Features

- Molded of high density polyethylene (HDPE) provides impact resistance, chemical resistance, 40+ years longevity. It is strong, but light composite material construction
- 12 x12 x36 inner space provide maximum workspace and bend radius provisions for all passives, cables and connectors. Flexible to drill on wanted size for duct access; Duct entry provided
- Stake-less, self-supporting in-ground base
- Molded-in ground line for consistent installations
- Anti-theft locking System, Hex 7/16” bolt with ¼ turn

Application



Fiber Optic Pedestals

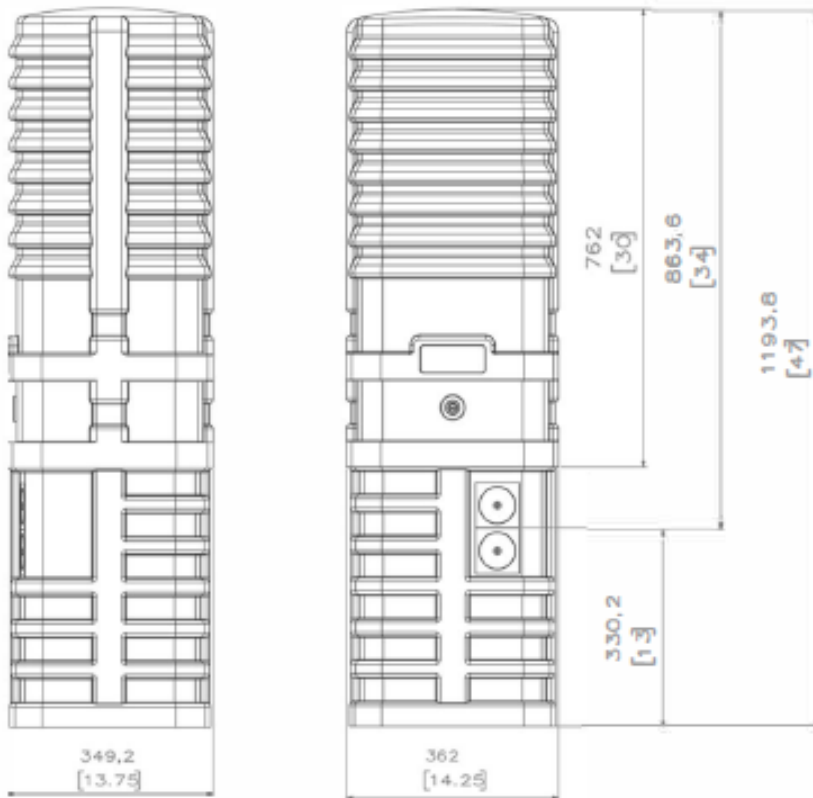


Telecom Pedestal

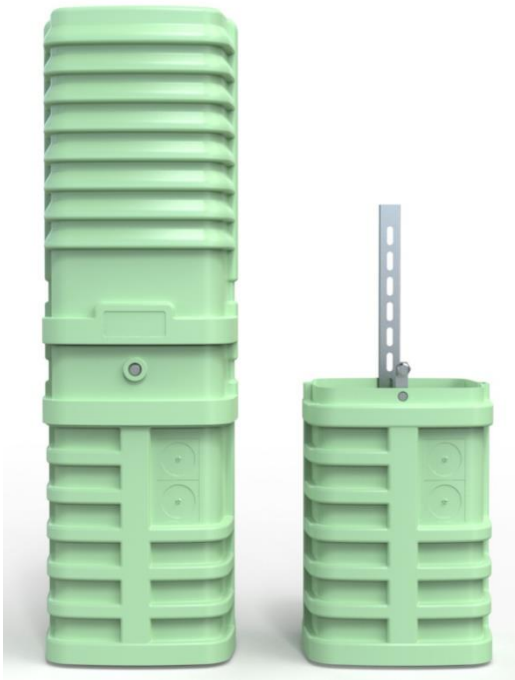


Fiber Pedestal

Dimension



Type of Stakes



Type "I"



Type "n"

Order Information:

| Item | Description |
|------------|---|
| CYP-1236-I | Fiber Optic Pedestal, 12*12*36 internal, HDPE, "I" Type bracket stake |
| CYP-1236-N | Fiber Optic Pedestal, 12*12*36 internal, HDPE, "n" Type bracket stake |